



BUSINESS INDICATORS

**AUSTRALIAN
CAPITAL
TERRITORY**

EMBARGO: 11:30AM (CANBERRA TIME) FRI 22 SEPT 2000

C O N T E N T S

	<i>page</i>
Notes	2
Summary of findings	3
Selected business indicators	5
FEATURE ARTICLE	
Motor Vehicle Use in the ACT	6
TABLES	
1 Business expectations: trading performance, operating income	9
2 Business indicators	10
3 ACT in relation to the rest of Australia	13
4 ACT in relation to the rest of Australia—percentage changes	14
INFORMATION	
Index of Feature Articles published in ACT Business Indicators	15

- For further information about these and related statistics, contact Ria Percival on Canberra 02 6207 0311, or the National Information Service on 1300 135 070.

NOTES

FORTHCOMING ISSUES

<i>ISSUE</i>	<i>RELEASE DATE</i>
October 2000	22 October 2000
November 2000	24 November 2000
December 2000	22 December 2000
January 2001	29 January 2001
February 2001	26 February 2001
March 2001	26 March 2001

DATA CHANGES

ABS statistical series are being impacted to varying degrees as a result of The New Tax System (TNTS), introduced in Australia from 1 July 2000. TNTS includes the removal of Wholesale Sales Tax and the introduction of a Goods and Services Tax (GST).

IMPACT OF THE NEW TAX SYSTEM ON DATA SERIES IN THIS PUBLICATION

Users of Building Approvals data should exercise caution when analysing movements in the value series over the next few months as they have been affected in a number of ways. For further information see *Building Approvals, Australia* (Cat. no. 8731.0).

Users of Capital Expenditure data should exercise caution when analysing estimates of expected expenditure for 2000–01 financial year. Businesses in the Survey of New Capital Expenditure have been asked to report expected expenditure for 2000–01 financial year based on the cost to them under TNTS. For further information see *Private New Capital Expenditure, State Estimates* (Cat. no. 5646.0).

Users of Retail data should exercise caution when analysing movements in the series over time. Estimates of retail turnover in both original and seasonally adjusted terms reflect unusually large spending ahead of the GST. The trend series attempts to measure underlying behaviour and, in the short term, this measurement may be adversely affected by an unusual influence in the original and seasonally adjusted data. For further information see *Retail Trade, Australia* (Cat. no. 8501.0).

SYMBOLS AND OTHER USAGES

ACT	Australian Capital Territory
n.a.	not available
no.	number
n.p.	not available for publication
p	preliminary
. .	not applicable
*	Represents data with a standard error of greater than 25%. Caution should be exercised when using this data.
—	nil or rounded to zero

Dalma Jacobs
Regional Director, Australian Capital Territory

SUMMARY OF FINDINGS

UPDATED SERIES

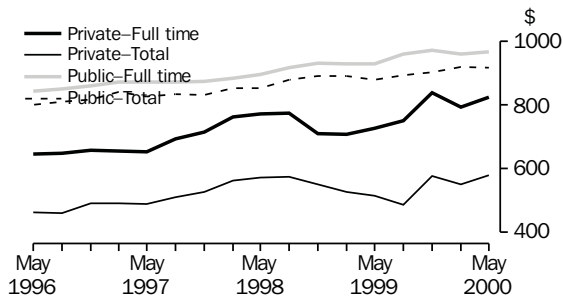
Series updated since the August 2000 issue are: building approvals, motor vehicle registrations, labour force, industrial disputes, retail turnover, housing finance, average weekly earnings, house price index, and wage cost index. The feature article, beginning on page 6 is Motor Vehicle Use in the ACT.

- Building approvals** The trend number of dwelling units approved in the ACT decreased by 14.7% to 122 dwelling units in July 2000. Nationally, the trend number of dwelling units approved decreased by 9.4% to 10,218 dwelling units in July 2000.
- The value of non-residential building approvals in the ACT was \$15.0 million in July 2000, a decrease of \$3.8 million from the previous month. There was a decrease of \$6.4 million compared to July 1999. Nationally, the value of non-residential building approvals increased by 17% from the previous month and was down 6% from July 1999.
- Motor vehicle registrations** The trend estimate for ACT new motor vehicle registrations in July 2000 was 1,074, down 0.3% from the previous month, and down 2.5% compared to July 1999. Nationally, the trend for total new motor vehicle registrations in July 2000 increased by 2.5% to 63,030 since June 2000, and was up 1.2% compared to July 1999.
- Labour force** In August 2000, the trend unemployment rate for the ACT decreased 0.2 percentage points to 4.6% (8,100 persons) compared to the previous month, and decreased 1.1 percentage points compared to August 1999. Compared with the previous month, trend employment increased by 0.7% (to 169,300 persons). Nationally, trend employment increased by 0.3% (to 9,119,200 persons) from the previous month, while the trend unemployment decreased by 1.1% (to 623,200 persons) for August 2000. The national trend unemployment rate decreased 0.1 percentage points to 6.4%. The trend participation rate in the ACT increased by 0.2 percentage points to 73.0%, while the national rate remained steady at 63.9%.
- Industrial disputes** For the 12 months ended May 2000 there were 31 working days lost per thousand employees in the ACT compared to 100 days nationally. In comparison with the 12 months ended May 1999, there was a increase of 29% for the ACT and an increase of 61% nationally in the number of working days lost per thousand employees.
- Retail turnover** The trend estimate for retail turnover in the ACT for July 2000 was not available for publication, however, it was \$246.4 million in June 2000. The national trend retail turnover was also not available for publication for July 2000, however, it was \$12,234.1 million in June 2000.

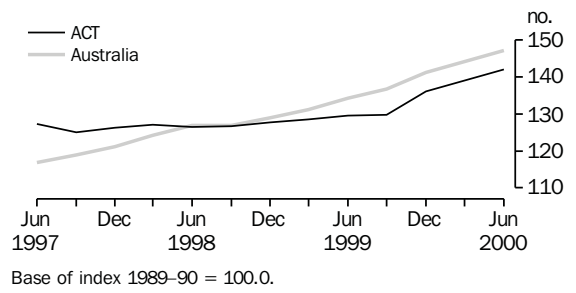
Housing finance	<p>The trend number of dwelling units financed (including refinancing) in the ACT in July 2000 was 758 a decrease of 5% from the previous month. The trend estimate for the value of commitments in the ACT decreased by 5.7% (to \$99 million) compared with the previous month. Refinancing of existing dwellings comprised 11% of the total value of dwelling units financed in July 2000. Nationally, the trend number of dwelling units financed (including refinancing) during July 2000 was 40,950, a decrease of 2% from the previous month, while the trend estimate for the value of commitments decreased to \$5,332 million (down 3%) from previous month.</p>
Average weekly earnings	<p>Trend full-time adult ordinary time earnings in the ACT were \$914.00 in the May quarter 2000, an increase of \$14.20 (2%) since the February quarter 2000. There was a rise in total average earnings from \$728.40 in the February quarter to \$751.70 in the May quarter (up 3%). The original series data suggests that private sector full-time average ordinary time earnings are rising (up 13% from May quarter 1999 to \$825.10 in May quarter 2000), similarly public sector full-time average ordinary time earnings are rising (up 4% from the previous year to \$968.60, May quarter 2000).</p> <p>Comparable national full-time adult ordinary time earnings were \$782.60 in the May quarter 2000, up \$7.60 (1%) since the February quarter 2000.</p>
House price index	<p>The established house price annual index for the ACT during the June quarter 2000 increased by 1.4% from the previous quarter and was up by 9.7% compared to June quarter 1999. Nationally, the established house price index increased by 2.4% from the previous quarter and was up by 9.7% compared to the June quarter 1999.</p>
Wage cost index	<p>The public sector wage cost index in the ACT for the June quarter 2000 increased 0.3 percentage points from the previous quarter, and was up 2.1 percentage points from the June quarter 1999. The wage cost index for the private sector increased 0.6 percentage points between the March quarter 2000 and the June quarter 2000, and was up 3.5 percentage points compared to June 2000. The overall wage cost index increased 0.4 percentage points from the previous quarter to 107.0, and increased 2.6 percentage points from the previous year. Nationally, the overall wage cost index increased 0.7 percentage points from the previous quarter to 108.4 and was up 3.0 percentage points compared to the June quarter 1999.</p>

SELECTED BUSINESS INDICATORS

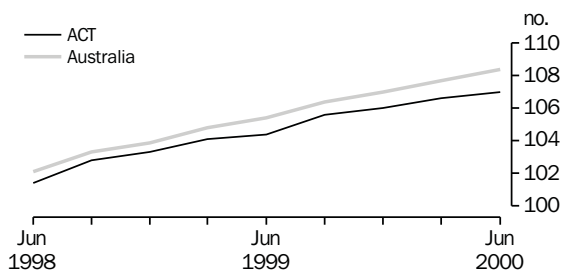
AVERAGE WEEKLY EARNINGS: Original



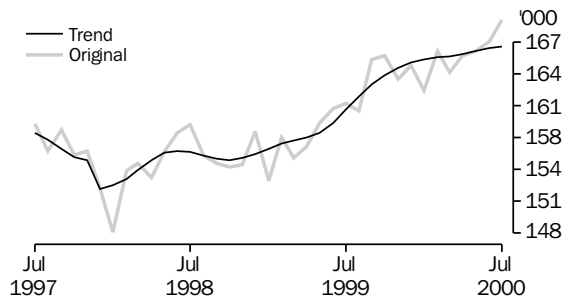
ESTABLISHED HOUSE PRICE ANNUAL INDEX



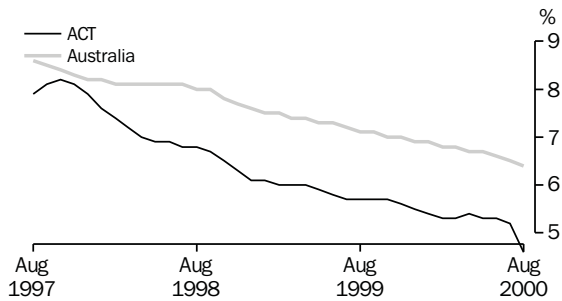
WAGE COST INDEX, Total hourly rates of pay excluding bonuses



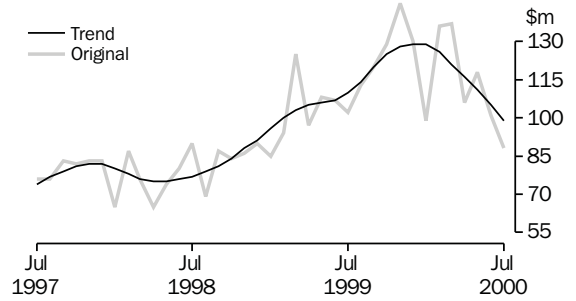
LABOUR FORCE, Employment



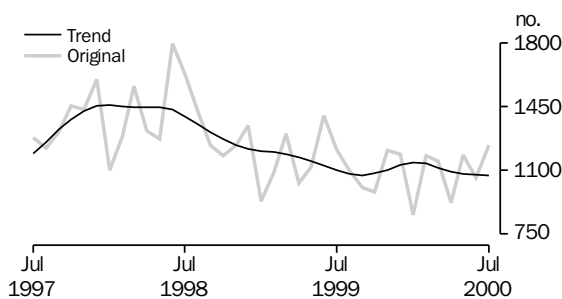
LABOUR FORCE, Trend Unemployment Rate



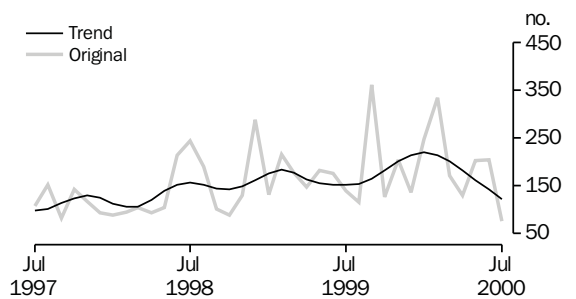
HOUSING FINANCE



NEW MOTOR VEHICLE REGISTRATIONS



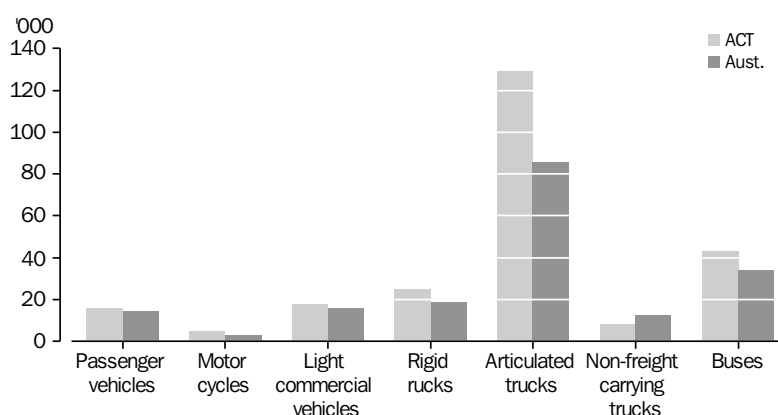
BUILDING APPROVAL—DWELLING UNITS APPROVED



The Survey of Motor Vehicle Use was conducted in four quarterly sample surveys over the period 1 August 1998 to 31 July 1999. During that period vehicles registered in the ACT for road use travelled 3,058 million kilometres (an average 16,100 kilometres per vehicle). These figures represent little change from the previous survey for the year ended 31 July 1998. During that period, registered road use vehicles travelled 3,045 million kilometres (an average of 15,900 kilometres per vehicle). The ACT recorded the highest distance travelled per vehicle among all States and Territories, and higher than the national average of 14,900 kilometres per vehicle. The 1998–99 data reflects a 0.4% increase in total kilometres travelled, however, there was a decrease in the number of vehicles on the road, from 192,036 in 1998 to 190,442 in 1999.

In the ACT, while freight-carrying vehicles and buses on average travelled greater distances, 87% of all vehicles on the road were passenger vehicles and these accounted for 86% (2,636 million kilometres) of total distance travelled. Freight-carrying vehicles contributed 12% (359 million kilometres); buses 1% (34 million kilometres); motor cycles 1% (27 million kilometres); while non-freight carrying trucks travelled *1 million kilometres. The average kilometres travelled by all types of vehicles except non-freight carrying trucks, were higher than the national average as shown in the following graph:

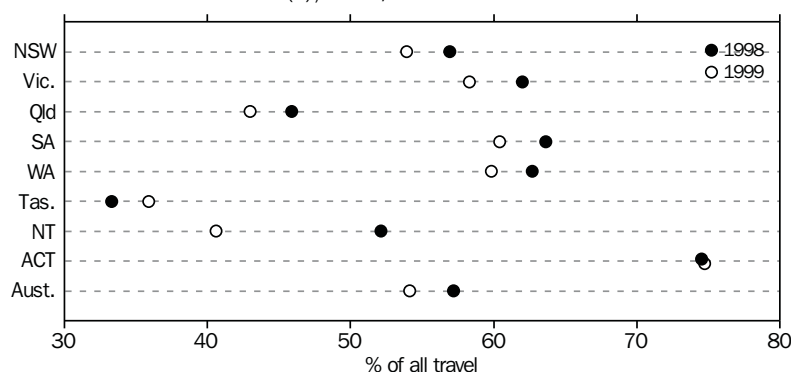
AVERAGE KILOMETRES TRAVELLED BY TYPE OF VEHICLE



Area of operation

In the 12 months ended 31 July 1999, an estimated 75% (2,285 million kilometres) of the total distance travelled by all vehicles registered in the ACT was within the Capital city. The ACT had the highest percentage of all States/Territories of total kilometres travelled within the capital city (of the State/Territory of registration) and interstate at 75% (2,285 million kilometres), and also distance travelled interstate, 25% (772 million kilometres). This compares to the national average of 54% travelled within capital city of the State/Territory of registration and 5% travelled interstate.

TRAVEL WITHIN CAPITAL CITY(a), STATE/TERRITORY OF REGISTRATION



(a) Travel within the capital city of the State/Territory of registration.

Business and private use of vehicles

Business use of vehicles in the ACT accounted for an estimated 30% (924 million kilometres) of the total distance travelled in the 12 months ended 31 July 1999. This compares to the national average of 37% business use of vehicles to total distance travelled. For those vehicles used partly or wholly for business purposes, the average distance travelled for business purposes was 14,200 kilometres compared to 14,600 nationally.

Articulated trucks averaged 138,900 kilometres, with 88% of their total business distance being travelled while they were either partly or fully laden with freight. Buses averaged 49,000 kilometres; rigid trucks 26,500 kilometres; light commercial vehicles 17,900 kilometres; passenger vehicles 12,100 kilometres; and motorcycles *4,400 kilometres.

Freight vehicle use

In the 12 months ended 31 July 1999, freight vehicles in the ACT travelled an estimated 223 million kilometres for business purposes while laden and carried 8 million tonnes of goods. This represents an increase of 12% from the 200 million laden kilometres that freight vehicles travelled in the year ended 31 July 1998 and an increase of 14% in the total tonnes carried during this period.

A total of 948 million tonne-kilometres was travelled by freight vehicles in the ACT, an increase of 631 million tonne-kilometres (199%) from the period ending 31 July 1998. Articulated trucks recorded the largest proportion of tonne-kilometres at 75% (*709 million tonne-kilometres), rigid trucks 18% (175 million tonne-kilometres) and light commercial vehicles 7% (64 million tonne-kilometres).

Bus use

In the ACT buses used partly or wholly for business travelled 33 million kilometres in the 12 months ended 31 July 1999. Route services accounted for 67% (22 million kilometres) of the total distance travelled, dedicated school bus services contributed 3% (*1 million kilometres), charter services 15% (*5 million kilometres) and tour services accounted for 18% (*6 million kilometres). The average distance travelled by buses in the ACT was 49,000 kilometres compared with 40,400 kilometres in July 1998. Nationally, the average distance travelled by buses was 38,000 kilometres in July 1999 compared to with 33,400 kilometres in July 1998.

Motor vehicles on register At 31 October 1999 there were 191,153 motor vehicles on register in the ACT. This total includes:

- 170,144 passenger vehicles;
- 16,838 light commercial vehicles;
- 1,011 buses;
- 2,549 rigid and articulated trucks;
- 522 campervans; and
- 89 non-freight carrying trucks.

In addition there were a further 32,568 other registered vehicles comprising motor cycles (5,880), plant and equipment (496), caravans (1,421) and trailers (24,771).

The average age of the vehicle fleet at 31 October 1999 was 10.1 years, which is comparable with the national average of 10.6 years. The 1999 estimated attrition rate, or the proportion of the total fleet off the register since the last census was 5.7%, a significant drop compared to the estimated 1998 rate of 9.2%.

1**BUSINESS EXPECTATIONS, TRADING PERFORMANCE, OPERATING INCOME(a)**

	<i>ACT</i>	<i>Aust.</i>
	%	%
Short-term		
Dec qtr 1997–Mar qtr 1998	-1.1	-0.3
Mar qtr 1998–Jun qtr 1998	-0.1	1.7
Jun qtr 1998–Sep qtr 1998	2.7	1.1
Sep qtr 1998–Dec qtr 1998	3.5	1.6
Dec qtr 1998–Mar qtr 1999	-2.7	-0.9
Mar qtr 1999–Jun qtr 1999	0.4	1.8
Jun qtr 1999–Sep qtr 1999	1.4	1.8
Sep qtr 1999–Dec qtr 1999	1.9	2.4
Dec qtr 1999–Mar qtr 2000	-5.4	-0.7
Mar qtr 2000–Jun qtr 2000	1.5	1.6
Jun qtr 2000–Sep qtr 2000	-3.6	0.8
Medium-term		
Dec qtr 1997–Dec qtr 1998	2.9	3.0
Mar qtr 1998–Mar qtr 1999	2.6	2.6
Jun qtr 1998–Jun qtr 1999	6.9	2.7
Sep qtr 1998–Sep qtr 1999	7.5	2.9
Dec qtr 1998–Dec qtr 1999	2.6	2.7
Mar qtr 1999–Mar qtr 2000	1.7	2.3
Jun qtr 1999–Jun qtr 2000	5.7	3.3
Sep qtr 1999–Sep qtr 2000	2.8	2.7
Dec qtr 1999–Dec qtr 2000	0.1	1.8
Mar qtr 2000–Mar qtr 2001	1.6	2.5
Jun qtr 2001–Jun qtr 2002	-2.6	1.5

(a) These data are all expectations and are not subsequently revised.

	Unit	ACT			Aust.		
		Latest figure	% change from		Latest figure	% change from	
			Previous period	Same period previous year		Previous period	Same period previous year
POPULATION, VITAL AND LABOUR							
POPULATION, Dec qtr 99	'000	311.2	0.1	0.9	19 080.8	0.3	1.2
Natural increase	no.	660	1.9	-12.2	31 774	21.4	1.2
Net migration	no.	-231	278.7	-67.2	27 582	-3.1	0.6
Total increase	no.	429	-26.9	793.8	59 356	8.6	0.9
LABOUR FORCE, Aug 00							
Original series							
Employed	'000	171.8	1.5	7.2	9 048.4	-1.2	2.5
Unemployed	'000	7.1	-2.7	-26.8	601.3	4.3	-3.6
Unemployment rate	%	4.0	-0.1	-1.7	6.2	0.3	-0.4
Participation rate	%	73.6	0.9	2.0	63.3	-0.6	0.3
Long-term unemployed, Jul 00	no.	1 585	-27.8	-37.1	160 788	-4.5	-14.2
Long-term unemployed as percentage of total unemployed		21.8	-2.5	-7.2	27.9	0.2	-2.1
Trend series							
Employed	'000	169.3	0.7	4.8	9 119.2	0.3	3.5
Unemployed	'000	8.1	-4.7	-16.5	623.2	-1.1	-8.0
Unemployment rate	%	4.6	-0.2	-1.1	6.4	-0.1	-0.7
Participation rate	%	73.0	0.2	0.8	63.9	—	0.7
WAGE AND SALARY EARNERS							
Number employed—Trend series, Feb qtr 00							
Public sector	'000	68.8	0.3	3.8	1 450.6	0.0	0.6
Private sector	'000	83.1	2.7	4.8	5 710.8	-0.7	1.1
Total	'000	151.9	1.6	4.3	7 161.4	-0.6	1.0
Gross earnings—Original series, Mar qtr 00							
Public sector	\$m	921.3	12.8	5.2	15 280.6	-2.8	1.6
Private sector	\$m	604.0	7.4	4.5	48 726.8	1.9	3.9
Total	\$m	1 525.3	10.6	4.9	64 007.9	0.8	3.3
JOB VACANCIES, May qtr 00	'000	2.2	-4.3	57.1	112.7	9.2	36.1
INDUSTRIAL DISPUTES IN PROGRESS, May 00							
Working days lost	'000	0.2	—	—	66.0	56.4	286.0
Days lost per '000 employees (year ended May 00)	no.	31.0	6.9	29.2	100.0	7.5	61.3
BUILDING AND CONSTRUCTION							
HOUSING FINANCE, Jul 00							
Secured commitments to individuals for							
Original series							
Construction of dwellings	\$m	11.0	10.0	-8.3	545.0	-10.4	-38.4
Purchase of new dwellings	\$m	3.0	-40.0	-62.5	183.0	-26.2	-25.0
Purchase of established dwellings	\$m	64.0	-9.9	-11.1	4 516.0	-4.8	-5.2
Re-financing	\$m	10.0	-33.3	—	1 018.0	-13.9	17.6
Total housing commitments	\$m	88.0	-12.9	-13.7	5 244.0	-6.4	-11.0
Seasonally adjusted series							
Total housing commitments	\$m	91.0	-9.9	-10.8	5 328.0	2.7	-7.8
Trend series							
Dwelling units financed	no.	758	-4.8	-10.6	40 950	-1.6	-9.3
Total housing commitments	\$m	99.0	-5.7	-10.0	5 332.0	-3.4	-10.7
BUILDING APPROVALS, Jul 00							
Original series							
Dwelling units	no.	76	-62.7	-45.3	9 281	-15.3	-36.8
Value of new residential	\$m	11.9	-55.9	-38.3	1 200.7	-10.5	-31.8
Value of residential alterations and additions	\$m	1.3	-50.0	-79.4	251.8	1.3	-13.9
Value of non-residential	\$m	15.0	-20.2	-29.9	1 156.6	16.8	-6.3
Value of total building	\$m	28.2	-41.7	-40.1	2 609.2	1.1	-20.6
Trend series							
Dwelling units	no.	122	-14.7	-19.7	10 218	-9.4	-27.6

	Unit	ACT			Aust.		
		% change from			% change from		
		Latest figure	Previous period	Same period previous year	Latest figure	Previous period	Same period previous year
BUILDING AND CONSTRUCTION continued							
BUILDING COMMENCEMENTS, Mar qtr 00							
New houses	no.	373	-5.8	30.9	31 296	4.4	39.7
Value of houses commenced	\$m	56.1	5.3	45.3	41 430.0	966.2	1 411.0
Value of non-residential building commenced	\$m	88.8	155.9	-31.7	2 693.7	-9.6	-5.7
Value of total commencements	\$m	189.5	30.2	-11.0	8 924.9	-2.0	19.8
PRICE INDEXES							
Established house price index, Jun qtr 00	no.	142.0	1.4	9.7	147.3	2.4	9.7
ENGINEERING CONSTRUCTION (Mar qtr 00)							
Private sector							
Value of work commenced	\$m	20.6	112.4	-17.3	2 858.7	-0.4	5.7
Value of work done	\$m	11.5	-22.8	-45.0	2 642.7	-10.9	-7.2
Value of work yet to be done	\$m	17.5	110.8	78.6	5 869.3	3.0	-11.0
Value of work done by public sector	\$m	29.4	38.0	27.3	131.3	1.8	5.7
PRICES, WAGES AND CONSUMER SPENDING							
CONSUMER PRICE INDEX, Jun qtr 00							
Food(a)		131.1	0.4	2.2	130.2	0.9	1.9
Housing(a)		100.6	1.6	6.2	101.2	0.5	4.8
Transportation(a)		136.4	0.8	6.4	132.1	1.5	7.5
All groups(a)		125.9	0.8	3.6	126.2	0.8	3.2
AVERAGE WEEKLY EARNINGS, May 00							
Original series							
Males	\$	979.8	1.8	10.5	832.8	1.0	4.3
Females	\$	826.2	2.1	6.4	697.9	0.9	4.2
Persons	\$	911.8	1.9	8.4	782.6	1.0	4.2
Trend series							
Males	\$	989.3	2.4	11.5	835.0	1.6	5.1
Females	\$	827.5	1.1	5.9	697.7	1.1	4.0
Persons	\$	914.0	1.6	8.4	783.7	1.4	4.6
WAGE COST INDEX, Jun qtr 00							
Public sector(b)		106.6	0.3	2.0	109.1	0.6	2.7
Private sector(b)		107.8	0.6	3.4	108.1	0.6	2.9
Total(b)		107.0	0.4	2.5	108.4	0.6	2.8
RETAIL TURNOVER, Jul 00							
Original series							
Food retailing	\$m	91.7	0.4	13.3	4 879.5	2.3	0.4
Department stores	\$m	20.7	-29.4	-19.8	847.2	-27.3	-19.7
Hospitality and services	\$m	38.9	0.8	14.1	2 108.1	3.5	3.0
All other retailing	\$m	85.8	-19.7	-1.2	3 836.8	-16.2	-2.9
Total	\$m	237.1	-10.9	4.2	11 671.6	-7.0	-2.0
Trend series							
Food retailing	\$m	n.p.	n.a.	n.a.	n.p.	n.a.	n.a.
Department stores	\$m	n.p.	n.a.	n.a.	n.p.	n.a.	n.a.
Hospitality and services	\$m	n.p.	n.a.	n.a.	n.p.	n.a.	n.a.
All other retailing	\$m	n.p.	n.a.	n.a.	n.p.	n.a.	n.a.
Total	\$m	n.p.	n.a.	n.a.	n.p.	n.a.	n.a.

(a) Base year: 1989-90 = 100.0.

(b) Base of each index: September quarter 1997 = 100.0.

	Unit	ACT			Aust.		
		% change from			% change from		
		Latest figure	Previous period	Same period previous year	Latest figure	Previous period	Same period previous year
TOURISM AND TRANSPORT							
HOTELS, MOTELS AND GUEST HOUSE ACCOMMODATION, Dec qtr 99							
Original series							
Room nights	'000	241.1	-0.7	-0.7	9 585.8	-3.2	5.9
Takings at current prices	\$m	23.7	-2.9	-2.5	1 003.1	-3.8	5.0
Guest arrivals	'000	180.0	-7.7	-5.2	7 597.6	-4.7	4.1
Guest nights	'000	402.4	-4.1	-3.2	17 112.5	-2.5	6.6
Room occupancy rate	%	57.6	-1.3	-7.2	58.1	-1.3	0.1
NEW MOTOR VEHICLE REGISTRATIONS, Jul 00							
Motor vehicles	no.	1 239	17.0	2.2	78 958	29.7	22.6
Seasonally adjusted motor vehicles	no.	1 250	47.6	7.1	77 656	55.2	24.0
Trend motor vehicles	no.	1 074	-0.3	-2.5	63 030	2.5	1.2
STATE ACCOUNTS							
STATE ACCOUNTS, Jun qtr 00(a)							
Trend series (chain volume measure)(b)							
Household final consumption expenditure	\$m	1 755	4.8	8.1	93 580	0.8	3.9
General government final consumption expenditure	\$m	2 586	8.8	18.3	30 329	2.4	9.9
Private gross fixed capital formation	\$m	411	8.2	32.2	31 906	1.8	7.4
Public gross fixed capital formation	\$m	228	-12.3	-14.3	6 415	-4.4	-3.8
State final demand	\$m	4 959	5.7	13.0	157 959	1.0	4.5
GROSS STATE PRODUCT (trend, chain volume measures) 1998-99	\$m	11 943	4.3	n.a.	563 517	6.1	—
PRIVATE NEW CAPITAL EXPENDITURE, Dec qtr 99							
Original series (at current prices)							
Buildings and structures	\$m	14	-51.7	27.3	3 097	-24.5	9.3
Equipment, plant and machinery	\$m	60	-28.6	114.3	7 425	-5.5	-0.6
Total	\$m	74	-34.5	89.7	10 522	-12.0	2.1
Trend series (at current prices)							
Buildings and structures	\$m	17	-29.2	-5.6	3 511	-5.8	4.8
Equipment, plant and machinery	\$m	80	11.1	135.3	8 068	1.7	-4.6
Total	\$m	98	2.1	88.5	11 579	-0.7	-1.9
INTERNATIONAL MERCHANDISE TRADE, Jun qtr 00							
Imports	\$m	3	—	-66.7	28803	9.0	21.9
Exports	\$m	7	—	16.7	26656	11.7	31.4

(a) Quarterly state final demand details are released as a special data service (Product no. 5206.0.40.001).

(b) Reference year for chain volume measures is 1998-99.

Source: ABS publications: Australia Demographic Statistics (Cat. no. 3101.0); Australian National Accounts: State Accounts (Cat. no. 5220.0); Australian National Accounts: Quarterly State Details (Cat. no. 5206.0.40.001); Average Weekly Earnings, States and Australia (Cat. no. 6302.0); Building Activity, Australia (Cat. no. 8752.0); Building Approvals, Australia (Cat. no. 8731.0); Consumer Price Index (Cat. no. 6401.0); Housing Finance for Owner Occupation, Australia (Cat. no. 5609.0); House Price Indexes: Eight Capital Cities (Cat. no. 6416.0); Industrial Disputes, Australia (Cat. no. 6321.0); Job Vacancies and Overtime, Australia (Cat. no. 6354.0); Labour Force, Australia, Preliminary (Cat. no. 6202.0); Labour Force, Australia (Cat. no. 6203.0); New Motor Vehicle Registration, Australia (Cat. no. 9301.0); Price Index of Materials Used in Housing Building (Cat. no. 6408.0); Private New Capital Expenditure, State Estimates (Cat. no. 5646.0); Retail Trade, Australia (Cat. no. 8501.0); Tourism Indicators, Australia (Cat. no. 8634.0); Tourism Accommodation, ACT (Cat. no. 8635.8); Wage Cost Index, Australia (Cat. no. 6345.0).

	Unit	Latest period	NSW	Vic.	Qld	SA	WA	Tas.	NT	ACT	Aust.
POPULATION	'000	Dec qtr 99	6 451.7	4 741.5	3 539.5	1 495.8	1 873.8	469.9	194.3	311.2	19 080.8
LABOUR FORCE (trend)											
Employed persons	'000	Aug 00	3 065.9	2 285.9	1 700.9	680.0	926.5	199.6	89.8	169.3	9 119.2
Unemployment rate	%	Aug 00	5.5	6.3	7.6	7.8	6.2	9.5	5.0	4.6	6.4
WAGE AND SALARY EARNERS (trend)											
Public sector	'000	Feb qtr 00	468.9	307.8	295.1	113.6	149.4	40.8	22.2	68.8	1 466.5
Private sector	'000	Feb qtr 00	1 888.8	1 551.2	1 022.0	419.7	585.3	117.0	54.5	83.1	5 721.6
Total public and private sector (trend)	'000	Feb qtr 00	2 357.7	1 859.0	1 317.1	533.3	734.7	157.8	76.7	151.9	7 188.1
STATE ACCOUNTS											
Gross state product (chain volume measures)(a)(b)	\$m	1998-99	209 937	151 213	96 000	40 493	63 198	11 059	6 460	11 822	89 911
PRIVATE NEW CAPITAL EXPENDITURE (trend)											
Total	\$m	Dec qtr 99	3 426	2 782	1 762	542	1 436	109	261	88	10 355
BUILDING APPROVALS											
Dwelling units approved (original)	no.	Jul 00	2 271	3 365	1 558	710	1 124	84	93	76	9 281
Dwelling units approved (trend)	no.	Jul 00	2 727	3 282	2 019	594	1 341	126	105	122	10 218
Value of non-residential building approved (original)	\$m	Jul 00	282.3	559.2	126.4	60.6	101.4	7.3	4.5	15.0	1 156.6
Value of all buildings approved (original)	\$m	Jul 00	670.9	1 150.1	319.7	153.4	253.7	17.7	15.4	28.2	2 609.2
ENGINEERING CONSTRUCTION											
Value of engineering construction work done	\$m	Mar qtr 00	1 289.4	865.4	1 078.8	218.8	695.8	62.7	72.3	41.0	4 324.1
AVERAGE WEEKLY EARNINGS (trend)											
Full-time adult ordinary time	\$	May qtr 00	824.9	765.8	724.9	728.4	804.1	736.6	797.4	914.0	783.7
RETAIL TRADE (trend)											
Retail turnover	\$m	Jul 00	n.p.	n.p.	n.p.	n.p.	n.p.	n.p.	n.p.	n.p.	n.p.
HOTELS, MOTELS & GUEST HOUSE ACCOMMODATION											
Room nights occupied	'000	Mar qtr 00	3 213.2	1 680.8	2 489.4	524.8	878.9	327.8	229.8	241.1	9 585.8
Room occupancy rate	%	Mar qtr 00	60.6	62.0	54.9	58.0	55.8	66.1	42.2	57.6	58.4
NEW MOTOR VEHICLE REGISTRATIONS (trend)	no.	Jul 00	21 687	16 281	12 450	3 793	6 017	1 104	624	1 074	63 030
	Unit	Latest period	Syd.	Melb.	Bris.	Adel.	Perth	Hob.	Dar.	Canb.	Aust.
CONSUMER PRICE INDEX											
Food(c)		Jun qtr 00	130.7	130.0	129.1	131.9	129.7	129.1	130.0	131.1	130.2
Housing(c)		Jun qtr 00	109.6	91.7	105.4	131.9	129.7	129.1	130.0	100.6	101.2
Transportation(c)		Jun qtr 00	133.5	131.2	130.5	131.9	131.7	129.3	129.3	136.4	132.1
All Groups(c)		Jun qtr 00	127.0	125.6	126.4	127.6	124.0	126.5	125.7	125.9	126.2
AVERAGE RETAIL PRICES											
Milk, carton, supermarket sales	1 litre	Jun qtr 00	135	150	145	143	145	135	145	123	n.a.
Bread, white loaf, sliced, supermarket sales	680 g	Jun qtr 00	231	244	215	215	224	241	225	231	n.a.
Beef, rump steak	1 kg	Jun qtr 00	1 297	1 137	1 139	1 303	1 171	1 097	1 298	1 250	n.a.
Chicken, frozen	1 kg	Jun qtr 00	374	377	331	338	363	382	381	381	n.a.
Potatoes	1 kg	Jun qtr 00	105	136	103	81	143	102	135	122	n.a.
Coffee, instant (jar)	150 g	Jun qtr 00	555	615	573	521	598	651	824	634	n.a.
Scotch nip, public bar	30 ml	Jun qtr 00	346	342	285	369	393	275	352	283	n.a.
Private motoring petrol											
Leaded	1 litre	Jun qtr 00	88.7	84.6	79.2	86.1	86.9	93.7	95.7	90.7	n.a.
Unleaded	1 litre	Jun qtr 00	85.8	82.0	76.3	83.4	84.1	91.6	92.9	87.6	n.a.

(a) Experimental series. Users are cautioned these estimates are derived indirectly by calculating a deflator from the expenditure components of the state series concerned. Therefore, in general, the sum of the state estimates does not equal the estimates for Australia.

(b) Reference year for chain volume measures is 1996-97.

(c) Base year: 1989-90 = 100.0.

	<i>Latest period</i>	NSW	Vic.	Qld	SA	WA	Tas.	NT	ACT	Aust.
POPULATION	Dec qtr 99	0.4	0.3	0.4	0.1	0.3	—	0.5	0.1	0.3
LABOUR FORCE (trend)										
Employed persons	Aug 00	0.2	0.4	0.3	0.3	0.1	0.2	-0.3	0.7	0.3
Unemployment rate	Aug 00	-0.1	-0.1	—	-0.2	—	0.1	-0.1	-0.2	-0.1
WAGE AND SALARY EARNERS (trend)										
Pubic sector	Feb qtr 00	0.3	2.0	1.0	0.6	-0.1	0.2	1.8	0.3	0.8
Private sector	Feb qtr 00	-1.4	2.3	0.7	1.1	0.6	-1.0	3.8	2.7	0.5
Total public and private sector	Feb qtr 00	-1.0	2.3	0.8	1.0	0.5	-0.7	3.2	1.6	0.5
STATE ACCOUNTS										
Gross state product (chain volume measures)(a)(b)	1998-99	4.1	6.2	4.5	2.1	2.1	2.5	7.6	2.6	1.1
PRIVATE NEW CAPITAL EXPENDITURE (trend)										
Total (at current prices)	Dec qtr 99	-2.0	-1.8	0.3	-3.7	-3.3	-1.8	6.5	15.8	-1.7
BUILDING APPROVALS										
Dwelling units approved (original)	Jul 00	-22.3	2.6	-22.0	18.7	-34.5	-7.7	-34.0	-62.7	-15.3
Dwelling units approved (trend)	Jul 00	-11.5	-5.8	-12.6	-8.9	-5.8	-10.0	1.0	-14.7	-9.4
Value of non-residential building approved (original)	Jul 00	-18.0	59.4	-5.5	149.4	21.3	-56.3	-75.3	-20.2	16.8
Value of all buildings approved (original)	Jul 00	-16.9	28.9	-13.7	53.9	-11.1	-43.3	-66.2	-41.7	1.1
ENGINEERING CONSTRUCTION										
Value of engineering construction work done	Mar qtr 00	-8.8	2.6	-4.8	-10.6	-14.6	11.2	-26.1	13.3	-6.8
AVERAGE WEEKLY EARNINGS (trend)										
Full-time adult ordinary time	May qtr 00	1.5	1.0	1.1	1.4	2.0	1.7	1.3	1.6	1.4
RETAIL TRADE (trend)										
Retail turnover	Jul 00	n.a.	n.a.	n.a.	n.a.	n.a.	n.a.	n.a.	n.a.	n.a.
HOTELS, MOTELS & GUEST HOUSE ACCOMMODATION										
Room nights occupied	Mar qtr 99	0.1	4.9	-10.9	-6.7	-3.9	15.1	-21.6	-0.7	-3.2
Room occupancy rate	Mar qtr 99	0.8	3.3	-5.7	-2.8	-1.9	9.9	-10.6	-1.3	-1.0
NEW MOTOR VEHICLE REGISTRATIONS (trend)	Jul 00	2.5	1.8	3.1	2.8	4.5	-2.0	0.8	-0.3	2.5
	<i>Latest period</i>									
CONSUMER PRICE INDEX										
Food(c)	Jun qtr 00	0.8	1.3	1.3	0.5	-0.5	1.0	2.0	0.4	0.9
Housing(c)	Jun qtr 00	0.9	—	0.3	0.5	-0.5	1.0	2.0	1.6	0.5
Transportation(c)	Jun qtr 00	1.8	1.5	1.6	1.2	1.0	2.1	2.5	0.8	1.5
All Groups(c)	Jun qtr 00	1.0	0.7	0.7	0.6	0.7	1.0	1.0	0.8	0.8
AVERAGE RETAIL PRICES (cents)										
Milk, carton, supermarket sales	Jun qtr 00	3.1	2.7	7.4	0.7	-0.7	0.7	0.7	2.5	n.a.
Bread, white loaf, sliced, supermarket sales	Jun qtr 00	9.5	4.7	7.5	31.9	10.3	18.7	2.3	9.0	n.a.
Beef, rump steak	Jun qtr 00	3.8	4.3	10.3	8.5	2.9	1.5	7.5	3.0	n.a.
Chicken, frozen	Jun qtr 00	5.9	6.5	-4.9	-4.2	0.3	-1.3	-10.8	-10.8	n.a.
Potatoes	Jun qtr 00	-19.2	-12.3	-24.3	—	4.4	24.4	-15.1	-14.1	n.a.
Coffee, instant (jar)	Jun qtr 00	-15.3	3.9	-9.5	-11.1	-2.8	2.4	46.1	21.9	n.a.
Scotch nip, public bar	Jun qtr 00	4.5	6.5	5.2	1.7	1.6	4.2	5.7	3.7	n.a.
Private motoring petrol										
Leaded	Jun qtr 00	22.2	20.5	25.1	20.9	19.0	20.3	21.6	21.6	n.a.
Unleaded	Jun qtr 00	22.4	20.9	25.3	21.2	19.0	20.7	21.1	21.2	n.a.

(a) Experimental series. Users are cautioned these estimates are derived indirectly by calculating a deflator from the expenditure components of the state series concerned. Therefore, in general, the sum of the state estimates does not equal the estimates for Australia.

(b) Reference year for chain volume measures is 1996-97.

(c) Base year: 1989-90 = 100.0.

INDEX OF FEATURE ARTICLES PUBLISHED IN ACT BUSINESS INDICATORS

<i>Issue</i>	<i>Title</i>	<i>Page reference</i>
Sep 2000	Motor Vehicle Use in the ACT	6
Aug 2000	Household Expenditure on Goods and Services in the ACT	6
Jul 2000	Small Business in the ACT	6
Jun 2000	Sports Attendance	7
	Attendance at Selected Cultural Venues	8
May 2000	Employee Earnings, Benefits and Trade Union Membership	7-8
Apr 2000	Emergency Services and Public Transport Usage in the ACT	8-12
Mar 2000	Forms of Employment	6-8
Feb 2000	Job Search Experience of Unemployed Persons	6-7
Jan 2000	Transition from Education to Work, May 1999	6-7
Dec 1999	Structure of the ACT Economy	6
	Participation in Sport and Physical Activities	7
Nov 1999	Crime and Safety in the ACT	6-8
Oct 1999	Labour Force Experience in the ACT	6-8
Sep 1999	Career Experience in the ACT	7-8
	Carers in the ACT	9
Aug 1999	Stock of Human Resources in Science and Technology	6-8
Jul 1999	Persons with a Disability in the ACT	6-9
Jun 1999	Participation in Education in the ACT	6-8
May 1999	Transition from Education to Work of Persons Aged 15-64 in the ACT	7-8
Apr 1999	Persons Not in the Labour Force in the ACT	6-8
Mar 1999	Education and Labour Force Status of the ACT's Young People	6-8
Feb 1999	Income and Living Standards in the ACT	6-9
Jan 1999	Education and Training Experience of ACT Residents	6-9
Dec 1998	Families and Labour Force Status in the ACT	6-9
Nov 1998	Retrenchment and Redundancy in the ACT	6-8
	Retail Turnover in the ACT	9
Oct 1998	Research and Experimental Development in the ACT	6-9
Sep 1998	Labour Force Mobility in the ACT	6-7
	Income Distribution in the ACT	8-9
Aug 1998	ACT Investors in Rental Dwellings	6-8
Jul 1998	Retirement and Retirement Intentions	6-9
Jun 1998	Profile of Small Business in the ACT	7-9
May 1998	Participation in Education in the ACT	7-8
Apr 1998	Retail Turnover in the ACT by Type of Retailing and Shopping Centre	7
	Shopping Preferences in the ACT	7-9
Mar 1998	Characteristics of Small Business	8-9
Feb 1998	Weekly Earnings of Employees in the ACT	8-9
Jan 1998	Transition from Education to Work of Working Age persons in the ACT	7-8
	Job Search Experience of Unemployed Persons in the ACT	9

FOR MORE INFORMATION...

- INTERNET* **www.abs.gov.au** the ABS web site is the best place to start for access to summary data from our latest publications, information about the ABS, advice about upcoming releases, our catalogue, and Australia Now—a statistical profile.
- LIBRARY* A range of ABS publications is available from public and tertiary libraries Australia-wide. Contact your nearest library to determine whether it has the ABS statistics you require, or visit our web site for a list of libraries.
- CPI INFOLINE* For current and historical Consumer Price Index data, call 1902 981 074 (call cost 77c per minute).
- DIAL-A-STATISTIC* For the latest figures for National Accounts, Balance of Payments, Labour Force, Average Weekly Earnings, Estimated Resident Population and the Consumer Price Index call 1900 986 400 (call cost 77c per minute).

INFORMATION SERVICE

Data which have been published and can be provided within five minutes are free of charge. Our information consultants can also help you to access the full range of ABS information—ABS user-pays services can be tailored to your needs, time frame and budget. Publications may be purchased. Specialists are on hand to help you with analytical or methodological advice.

- PHONE* **1300 135 070**
- EMAIL* **client.services@abs.gov.au**
- FAX* 1300 135 211
- POST* Client Services, ABS, GPO Box 796, Sydney 1041

WHY NOT SUBSCRIBE?

ABS subscription services provide regular, convenient and prompt deliveries of ABS publications and products as they are released. Email delivery of monthly and quarterly publications is available.

- PHONE* 1300 366 323
- EMAIL* subscriptions@abs.gov.au
- FAX* 03 9615 7848
- POST* Subscription Services, ABS, GPO Box 2796Y, Melbourne 3001



2130380009008
ISSN 1320-808X

RRP \$17.00